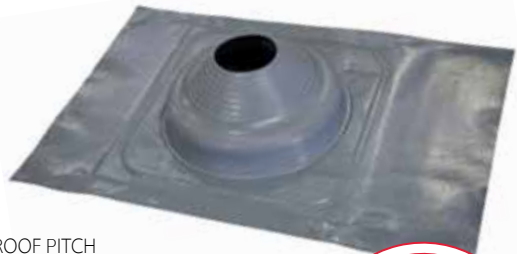


# Acrylead Tile Flash

For tiled and slate roofs



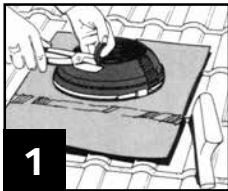
- ✓ Acrylead offers the benefit of a thermo baked acrylic primer coating to both surfaces of the lead apron, ready for finish coating to match surrounding roof or trim colours.
- ✓ Acrylead is 17Kg/M2 which is the minimum standard allowable in the building code for sheet lead flashings.
- ✓ The potential for lead oxides to leach from the apron and cause staining is now virtually eliminated.
- ✓ EPDM withstands temperatures from -50°C to 115°C and up to 150°C intermittently.
- ✓ Easy to install - no messy sealants required or sticky backing used.



CODE	BASE (MM)	PIPE (MM)	ROOF PITCH
TFL0-35	300 x 600	0-35	10-45°
TFL0-35 TWIN	300 x 600	0-35 x 2	10-45°
TFL5-55	300 x 600	5-55	10-45°
TFL50-70	300 x 600	50-70	10-45°
TFL5-127	400 x 600	5-127	10-45°
TFL75-175	450 x 600	75-175	10-45°
TFL150-300	600 x 900	150-300	10-45°

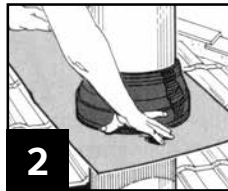


## Installation Instructions for Lead and Aluminium Flashing:



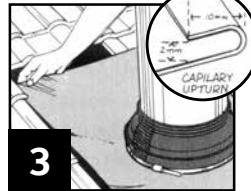
1

Trim Tileflash cone to suit pipe size.



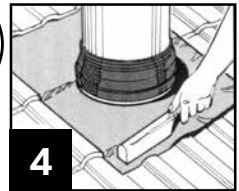
2

After first lubricating the flue with water, slide Tileflash down to tile level.



3

Flatten the Acrylead and form an anti-cappillary fold. Then place the upper edge of the base underneath the tiles up stream.



4

Finally, dress the apron to the surrounding tile area.