

# Fast Flash

## Self Adhesive and very workable lead replacement

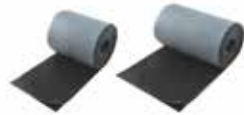


- ✓ Easy to install being light weight, easy to trim and fully self-adhesive
- ✓ Slower set adhesive allows time for repositioning
- ✓ Flexible, malleable and stretchable making Fast Flash very workable and able to dress well to all profiles
- ✓ Product range includes rolls in two standard sizes in grey or black
- ✓ Environmentally friendly aluminium stretch netting cast in polymer rubber
- ✓ Other sizes and colours available on request



### Fast Flash - quick weatherproof flashing

Fast Flash consists of aluminium stretch netting cast in environmentally friendly polymer rubber. Fast Flash is self-adhesive on the reverse and protected by cover foil that is removed before installation. Fast Flash is available in rolls in three standard sizes and comes in grey or black.



280mm

370mm

Code	Length (m)	Width (mm)	Weight (kg)	Colour
FFR5-280G FFR5-280B	5	280	4.7	Grey Black
FFR5-370G FFR5-370B	5	370	5.9	Grey Black

### Self-adhesive flashing

Fast Flash is ideal for a quick and secure flashing solution. Fast Flash can be installed on roofs with a slope of min. 5° and on almost all roof materials. Fast Flash is environmentally friendly and easy to install as the reverse is self-adhesive, as well as being flexible and very workable.

